

Euromix™ Euralbi Fino

Euromix™ Euralbi is a pre-packed, quality controlled fine powdered gypsum based white set plaster, manufactured in Spain and imported exclusively by Euromix Pty Ltd for use in Australia and New Zealand.

Euromix™ Euralbi Fino has been designed for use as a fine finish, white set top coat. Euromix™ Fino works best as the finishing coat applied over a Euromix™ Euralbi Plus base coat.

Nature’s Wonder Building Material: Naturally occurring ‘plaster’ has been an aid in human development over thousands of years, through its use in medicine, agriculture, ceramics, art, cosmetics and construction.

In construction, plaster has found use both as a structural element and for decoration also - in monuments, religious buildings, houses and engineering works dating back thousands of years.

Euromix™ Euralbi, manufactured in Spain, is a factory produced, refined derivative of this naturally occurring building material.

The unique thermal conductivity, permeability, mechanical resistance and hydraulic setting capabilities of natural gypsum have been enhanced by the quarrying of only the best raw materials, the addition of selected minerals and through the quality control achieved in a modern factory.

Product Features

Euromix™ Euralbi Fino offers many advantages over traditional white set plaster;

- Pre mix saves time on site and reduces waste and material loss.
- Dries to a harder finish, giving a more durable wall covering.
- Ph and thermal conductivity characteristics are similar to those of the human body, making Euromix™ Euralbi friendly to the touch and an ideal covering for walls in habitable buildings.
- Retains the crystal structure and chemistry of natural plaster, enabling it to replicate plaster’s ability to absorb and release airborne moisture as the living environment changes.
- Offers increased thermal resistance characteristics and improves thermal insulation.

Suitable for Most Building Substrates

Euromix™ Euralbi Fino is suitable for internal architectural plastering and patching applications over most substrates including Euromix™ Plus, clay and cement bricks / blocks, pre-cast or site poured concrete surfaces, aerated concrete blocks / panels, fibre cement sheets and expanded polystyrene (EPS) surfaces.



Product Summary

Product Description

Euromix™ Euralbi is a pre-packed, quality controlled fine powdered plaster, manufactured in Spain and imported exclusively by Euromix Pty Ltd for use in Australia and NZ.

Packaging

Dry packed in 24kg composite paper & plastic bags.

General Use

When mixed with water, Euromix™ Euralbi Fino, is applied by hand over Euromix™ Euralbi Plus base coat and sometimes directly onto rendered surfaces on most walling substrates – at thicknesses from 1 to 2mm in one coating.

Where Euromix™ Euralbi Plus has been applied as the base coat, it is normal to use two coats of Euromix™ Euralbi Fino to finish the wall. With other base coats (like render) 2–3 coats may be required.

Appearance

In the bag and before the addition of water, it appears as an off-white mixture of finely ground plaster like materials.

After application and after drying finishes it appears as an off white / beige colour with a very smooth set finish.

Euromix™ Euralbi Fino is not recommended for use in external applications. When used as a wall finish in wet areas (bathrooms, laundries, kitchen splash back areas, etc.) or where there is a high concentration of moisture it is critical that Euromix™ Euralbi Fino be painted with suitable water-resistant paint.

Euromix™ Euralbi Fino

Substrate Preparation

It is critical that any possible moisture ingress to the finished plaster and the substrate is eliminated prior to application of the Euromix™ Euralbi Fino.

Ensure the surface area to be finished is clean and free of contaminants and adhesive-inhibiting materials such as dust, grease, dirt, fungus, mould releasing agents, excessive water, etc.

Expansion and differential material joints must be expressed – such joints are likely to crack.

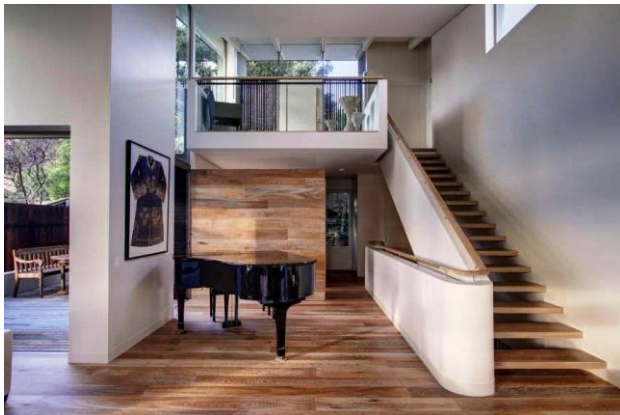
Euromix™ Euralbi Fino can be applied over Euromix™ Euralbi Plus walls once the base coat is set.

Mixing and Application

Euromix™ Euralbi Fino can be prepared in a bucket by drill or by trowel on a table. In all cases clean, uncontaminated water must be used and the material be mixed in small quantities, approximately half a bag at a time (depending on the number of 'finishing trowel-hands' applying the material).

Approximately 0.6-0.8 litres of clean water is required for every 1kg of Euromix™ Euralbi Fino mixed.

The average working time for Euromix™ Euralbi Fino, after mixing is 50 minutes (depending on temperature, humidity and air movement on the site).



Euromix™ Euralbi Fino is applied by a stainless steel trowel in very thin layers in a tight semi circular fashion. It is critical that a wet edge is maintained at all times while applying the Euromix™ Euralbi Fino and that the entire wall be finished with the first coat before subsequent coats are applied.

Ensure that each coat of Euromix™ Euralbi Fino is properly set before applying subsequent coats.

It is important that tools (trowels and hawks) are regularly washed through the process – to keep them clean and free of dried or partially dried Euromix™ Euralbi Fino and other contaminates.

Finishing – Ready for Painting

After 2–3 coats have been applied, as described previously, by experienced tradespeople, Euromix™ Euralbi Fino should be ready for preparation for the application of paint.

Euromix™ Euralbi Fino should be sealed with only an oil based binding sealer – usually only one coat is required – before painting or finishing with other architectural finishes.

A mirror or polished finish can be achieved if desired. Such a finish is very attractive and substantially more expensive, as it takes extra care and time and requires highly skilled tradespeople.

Like all traditional set plaster finishes, Euromix™ Euralbi Fino should be sealed with only an oil based, binding sealer before painting or finishing with other architectural finishes. Remove any dust from the surface of the Euralbi before applying the binding sealer, usually only one coat of binding sealer is required to prepare the plaster for further painting.

Wash Up

All tools are cleaned with water. It is most important that if machinery is used to apply Euromix™ Euralbi, that it is washed and cleaned immediately upon finishing the application and that all machinery and hoses are kept free from any contamination.

Drying Times

Drying and curing of the product is affected by type, dryness and porosity of the substrate, temperature, humidity, ventilation, climatic conditions and application technique and therefore drying and curing times given below are a guide (at 25C & 50% RH). Touch dry: Thirty (30) to sixty (60) minutes. Recoat: 24 hours.

Some Properties

Surface Hardness	70 / 75 units Shore-c
Thermal Conductivity	0.19 Kcal/h m °C (at 20°C) (at 11mm thickness)
Density	1.24 kg/m ³ (1m ³ = 1,240 kg)
Particle Size	0 – 1mm
Resistance to bending	15-29 Kg/cm ²
Resistance to compression	60-65 Kg/cm ²
Acoustic Isolation	58 dB (@ 11mm thickness and 600 Hz)
Coverage	1.2 to 1.5 sqm/kg (@1mm) (30 – 40 sqm/bag).
Shelf life	18 months when properly stored.

The information contained in this summary is typical and does not constitute a full specification, as conditions and specific requirements will vary from project to project.